



ELLON ACADEMY WEEKLY INFORMATION FOR PARENTS/CARERS

Date: Friday 11th November 2023

Dear parents/carers,

This week our wonderful Exec Team have been busy delivering assemblies to all year groups on the theme of Remembrance. The assemblies have been very well received and a huge thanks to the Exec Team for their commitment and hard work. Here is a link to the assembly slides for your information:



<https://ellonacademy.aberdeenshire.sch.uk/parent-zone/>

This week, we are showcasing the work of learners in the Business Education Faculty, and I'm delighted to share more pupil achievements with you again.

Activities Days 2024

Ellon Academy is pleased to announce our annual Activities Programme will be re-established this session. S1-S3 pupils will participate in a 3-day package of activities from Wednesday 29 May to Friday 31 May 2024. Packages range from school-based activities, outings in the local area to trips further afield including residentials to Shetland, London, and Alton Towers. The packages on offer cover a wide range of activities including arts & crafts, cultural, cooking and baking, sporting, adventurous activities, and S1 Camp. Further information will follow shortly.

Please note, the Loch Insh residential trip (information to parents/carers tomorrow) is out with the 3-Day Activities Programme and is in addition to this.

Ellon Academy Careers Convention Tues 14th Nov 2023 6-8pm

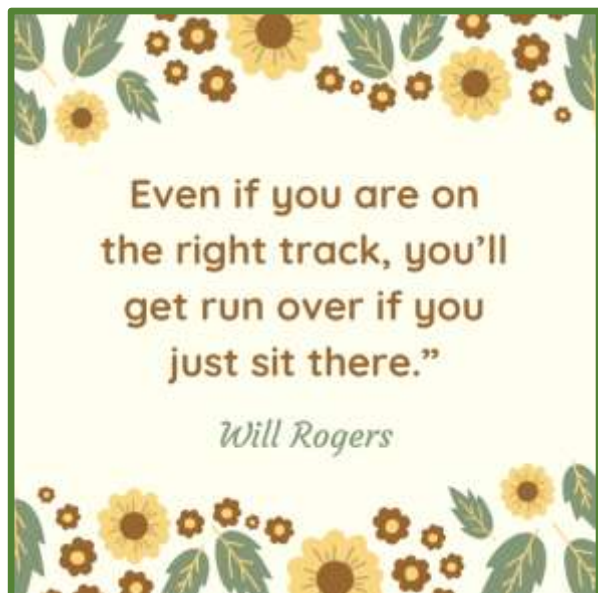
We look forward to welcoming you to the Ellon Academy Careers Convention 2023 from 6 – 8 pm on Tuesday 14th November. All pupils and parents are welcome to come along and meet with employers and representatives from further education centres to find out more about a range of career opportunities. Further information is available at <https://tinyurl.com/EACareersConvention>.

We hope you enjoy our up-dates and reading about our pupil successes in this week's newsletter.

If your child/children have successes you'd like to share with us, please send us an email via the school email address marked FAO Mrs P Buchan, Rector. Any photos you can share with us are always welcome too.

ellon.aca@aberdeenshire.gov.uk

Quote of the Week beginning Monday 13.11.23:



Assemblies – Due to in-service days next week there is only one assembly planned for S1 on Tuesday 14.11.23 so that Mrs Warne can provide information to S1s on the exciting events to take place during Book Week.

S1 – Tues 14.11.23 Assembly in the Theatre at 8.25am

Weekly Merits

Most Merits/Over and Above:

We are pleased to report that the learners to the right are in the top group of learners for merits this week. Moving forward this term, we will be using messages to recognise those learners who are gaining most merits for 'dedication'. At Ellon Academy we look to develop a Growth Mindset and no better way to do this than praising effort. We will continue to celebrate pupils going Over and Above.

The learners to the right have accrued the most merits over the last week and will receive their canteen fast passes on Mon 13.11.23 after registration in the sunken social area. Well done everyone!

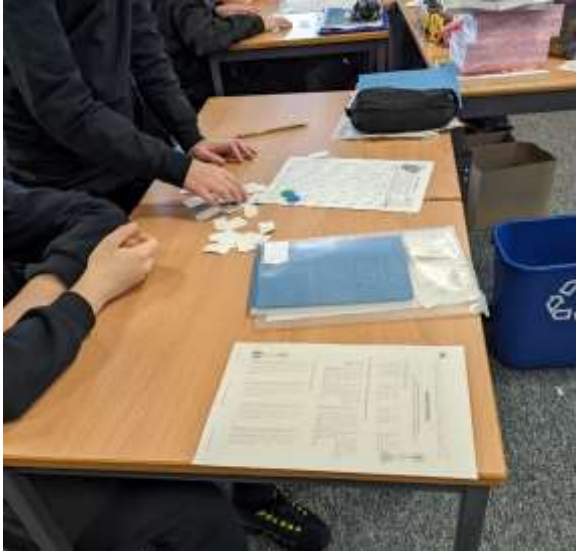


Russell	E	1C1	4
Lexie	S	1C1	4
Veronika	M	1C2	4
Anna	A	1F1	4
Lily	B	1F1	4
Lily	G	1F1	4
Jayden	Y	1F1	4
Connie	D	1S1	4
Freya	D	1S2	4
Lewis	D	2F1	3
Scott	M	2F1	3
Charlotte	W	2F1	3
Eva	G	2K1	3
Crystal	G	2K1	3
Alyssa	E	2M2	3
Isla	O	2M2	3
Emma	K	3C1	3
Alana	M	3C1	3
Lennox	A	3M2	4
Rian	G	4F1	4
Sophie	K	5C1	3
Kayleigh	F	5F1	3
Aidan	D	5M2	3
Lila	W	5M2	3
Cameron	H	6K	3
Sofia	M	6K	3
Eilidh	G	6M	3

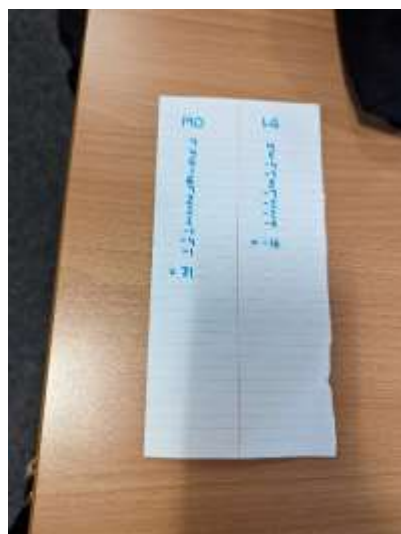
Learning at Ellon Academy – Maths Faculty:

1A1 have been working on negative numbers this week. We played a game where we would pick a random card, which would tell us a positive or negative value. We would then have to say our calculation out loud before moving the required spaces. Our partners were quick to pick up on it if we didn't say our calculation correctly, as this meant going back 8 places! 😬

We've had tremendous effort and lots of early homework submissions too! Very well done and keep up the good work! ★



Amazing work from 2M2 in enrichment this week! Working on strategy games with a twist! We were playing boxes but not every box contained positive points! Pupils started figuring out ways to "block" their opponent and end up with a high positive score! We also worked together to find the best way to keep a running total on our scores! Great work everyone!★



Learning in the Business Education & ICT Faculty week beginning 30/10/23:

This week we are showcasing the work of the Business Education & ICT Faculty.

In **S1 Enterprise** this week, pupils have been learning about Armistice Day. Pupils created a lovely wall display, with a variety of different coloured poppies before undertaking some research, which was then summarised into a PowerPoint presentation.



What are we remembering?

- The soldiers that have died in the world war 1/2.
- We do this to show respect and honour.



In **S2 Enterprise**, pupils have continued to learn about how businesses produce their goods and the impact that their production could have on the environment. Pupils have summarised their findings in PowerPoint presentations. Samples of key points are shown below:

AIR POLLUTION

Air pollution is contamination of the indoor or outdoor environment by any chemical, physical or biological agent that modifies the natural characteristics of the atmosphere.



SEA OR RIVER POLLUTION

Water pollution occurs when harmful substances—often chemicals or microorganisms—contaminate a stream, river, lake, ocean, aquifer, or other body of water, degrading water quality and rendering it toxic to humans or the environment.



HARM TO WILDLIFE

Plastic pollution is devastating to wildlife because it doesn't simply disappear. It can take hundreds of years to break down into smaller and smaller pieces which can be easily ingested. Plastic is toxic and can kill wildlife or make them more susceptible to disease



HARM TO HUMANS

Exposure to high levels of air pollution can cause a variety of adverse health outcomes. It increases the risk of respiratory infections, heart disease and lung cancer.

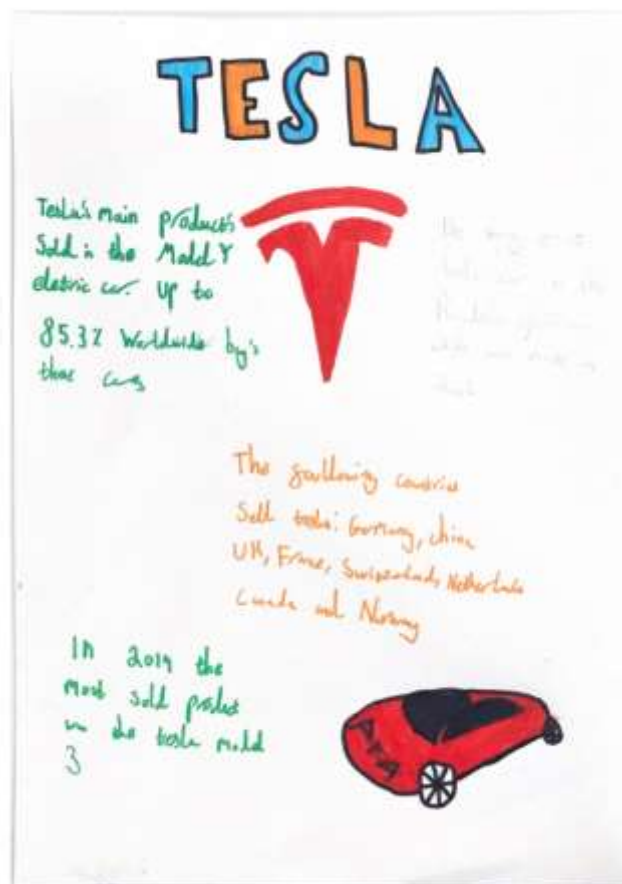
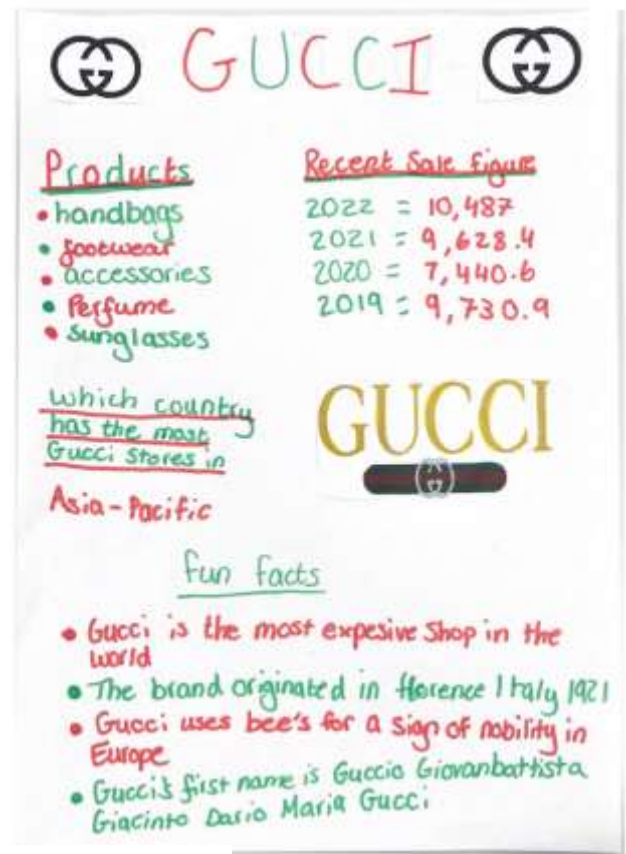


LAND POLLUTION

Polluted soil, which leads to a loss of fertile land for agriculture and a reduction in the availability of food. Climate change, which causes an onslaught of disastrous problems, including flash floods and irregular rainfalls. The endangerment and extinction of species in wildlife

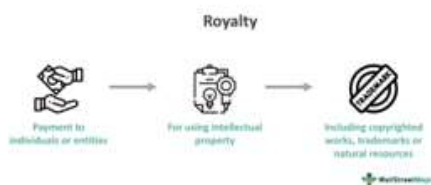


S2 Enrichment classes have been learning about the importance of branding to businesses. Pupils were looking at how different brands market their goods and services and summarising in a poster:



In **S3 Accounting**, pupils have been completing Job Cost Statements and learning about royalties, summarising the key points in a poster. A couple of samples are shown below:

Royalties



Royalty types:

- Book- they are paid to authors by publishers, typically for every book that is sold, the author will receive an agreed amount.
- Performance- the owner of copyrighted music receives an amount whenever their music is played.
- Patent- Innovators or creators patent their products.



What is a Royalty?

A royalty is a payment to an owner for the use of an asset.

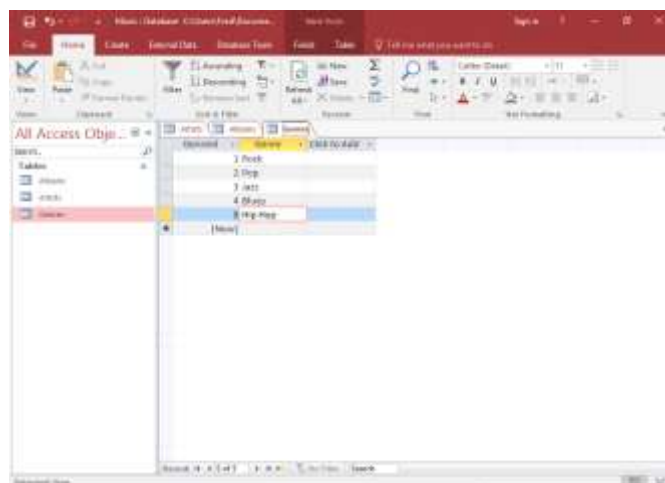


Types of royalties:




- Patents- people who create products patent them so that others need permission to use them.
- Minerals-mineral extractors must pay the owner of the land they
- Books- publishers pay the author based off how many copies of the book are sold.
- Franchise- Another business owner may be interested in opening another branch of a business that exists.]


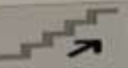



In **S3 Administration & IT**, pupils were introduced to Microsoft Access and have started to build their skill level in creating and editing database files. Pupils have also been able to query their database to find specific information, exporting this to Word to enable printing.



In **S3 Business**, pupils have been looking at different stakeholders of a business and what their interests/influences would be. Pupils used a thinking routine, Connect-Extend-Challenge, where they had to think about what they already knew about stakeholders in relation to what they knew by the end of the lesson.

Connect - Extend - Challenge		
 CONNECT How are the Ideas and Information presented connected to what I already know?	 EXTEND What new Ideas did you get that extended or broadened your thinking in new directions?	 CHALLENGE What challenges or puzzles have come up in your mind from the Ideas and Information presented?
I thought a stakeholder was someone who owns a part of a business like a shareholder or works in a business.	I learned a stakeholder doesn't work in a business and that it's someone invested in a business.	How business balance all the different interests of those who work for them.

Connect - Extend - Challenge		
 CONNECT How are the Ideas and Information presented connected to what I already know?	 EXTEND What new Ideas did you get that extended or broadened your thinking in new directions?	 CHALLENGE What challenges or puzzles have come up in your mind from the Ideas and Information presented?
<ul style="list-style-type: none"> Someone who holds a Stake. Someone who owns the business. 	<ul style="list-style-type: none"> customers are Stakeholders. Stakeholders don't hold Steaks. 	<ul style="list-style-type: none"> conflict of interest between Stakeholders.



Our **S3 Games Designers** have been working on Computer Systems, where they have been exploring the hardware and software components of computers and how these function. Pupils have been looking at the origins of encryption and how the “Caesar Cipher” was used to send secret messages. Pupils have then looked at methods of breaking codes.

Methods of “Cracking” codes

- Brute Force - Trying all combinations until you find one that works
- Spotting Patterns - Looking for patterns in words such as double letters
- Frequency Analysis - The english language has some letters that are much more commonly used than others.

E	11.1607%	56.88	M	3.0129%	15.36
A	8.4966%	43.31	H	3.0034%	15.31
R	7.5809%	38.64	G	2.4705%	12.59
I	7.5448%	38.45	B	2.0720%	10.56
O	7.1635%	36.51	F	1.8121%	9.24
T	6.9509%	35.43	Y	1.7779%	9.06
N	6.6544%	33.92	W	1.2899%	6.57
S	5.7351%	29.23	K	1.1016%	5.61
L	5.4893%	27.98	V	1.0074%	5.13
C	4.5388%	23.13	X	0.2902%	1.48
U	3.6308%	18.51	Z	0.2722%	1.39
D	3.3844%	17.25	J	0.1965%	1.00
P	3.1671%	16.14	Q	0.1962%	(1)

In addition to code breaking, pupils have taken part in a nation-wide competition, Bebras, run by University of Oxford. This challenged pupils to test their problem-solving abilities by completing a series of puzzles. To get to the next round, we are hoping to be in the top 10% of participants – fingers crossed!

2023 Bebras Challenge (Years 12-14)

Previous Next

Autonomous Car

Time Remaining 17:08

- Planting Carrots
- Dream House
- Magic Tree
- Autonomous Car
- Logic Treasure
- Companion Planting
- Unloading
- Tom's Map
- Closer or Further
- Log Storage
- Trains
- Beaver Bundles
- Bumping Robots
- Juice Carts
- Ogham Code
- Counting
- Job Assignment
- New Toy

Tim is travelling with his autonomous car. A recent software update of the car had a major bug which causes it to make the same turn every time it reaches the same type of junction (roundabout, T-junction, crossroads) as shown below. For example, the car always takes the third exit at every roundabout.

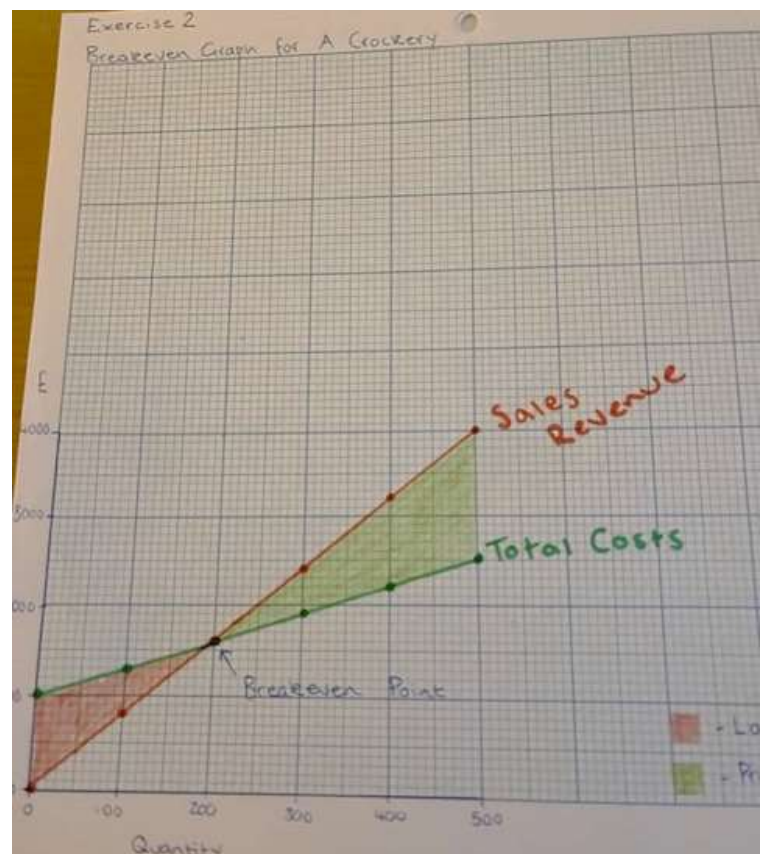
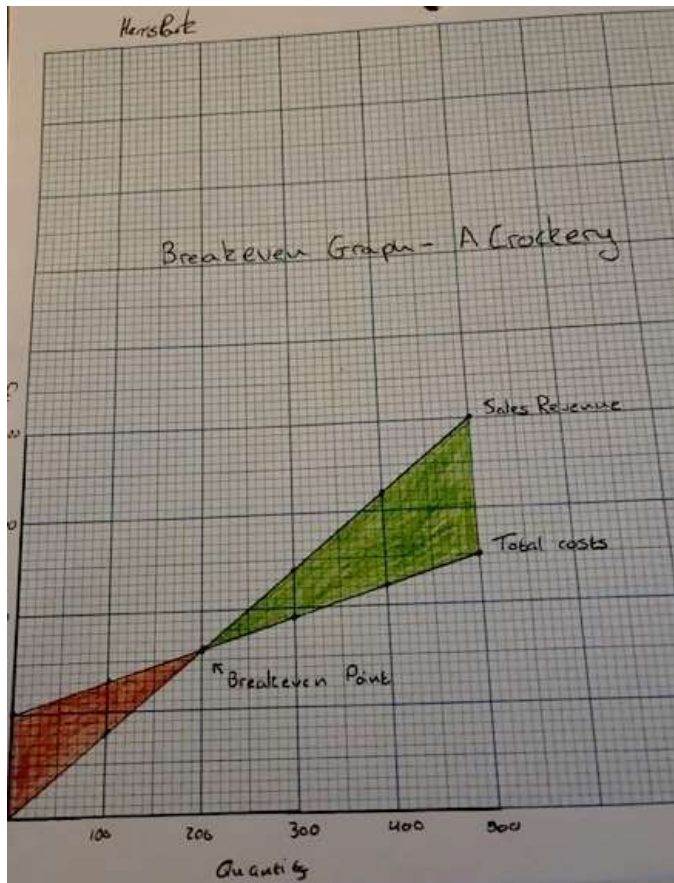
Question
Where will Tim end up on this trip?
(Click on the letter and press Save.)

Save

End

Our Senior Phase pupils are edging ever closer towards prelims, so all classes have been continuing to work towards being "exam ready" by the start of December. Pupils have been reminded of the extra support that is available from faculty staff and additional resources that would be of use to them i.e., textbooks, SCHOLAR, Bitesize.

National 5 Accountants were introduced to Overhead Analysis this week, where overheads are allocated or apportioned to cost centres to produce a cost unit for pricing. They also completed tasks on Break Even and prepared charts to show breakeven points, highlighting profit and loss at production levels.



National 4/5 Administration & IT pupils have been creating 4-page booklets, summarising their knowledge, and understanding of Customer Care.



Guidelines for Good Customer Care

Some guidelines for good customer care are:

- To be polite and formal even if you are having a bad day.
- To take interest on your complaint and to use proper language.
- To listen carefully and speak clearly to the customer and treat them with respect also ensure that if the issue can be solved then and there that it should be done but if not let them know that they will get back to them and if not give them a discount or some money back.



What is Customer Care?

- How customers are treated by staff ie on the phone, in the shop
- Queries and complaints are handled quickly



Benefits of good Customer Care

- Satisfied customers
- Loyal customers
- It attracts new customers

Impact of poor Customer Care

- Fewer sales
- Increased complaints
- Unhappy customer and employees
- Increased costs
- Poor reputation



Complaints Procedure

- Complaints should be treated seriously and recorded.
- Complaints should be handled by trained staff.
- Complaints should be acknowledged, and customers should be kept informed.
- Time limits for dealing with complaints and waiting time for customers should be established.
- Results of complaints should be communicated to customer in timely manner.

National 4/5 Business Management classes have been learning about budgeting, in relation to personal finance and within a business. Pupils have prepared Cash Budgets and answered questions relating to the financial performance in relation to success and the need for additional finance.

Cash Budget of Fui Wing
for the months of October and November

	October	November
	£	£
Opening balance	65	420
Cash in		
Wages	1200	1200
	1200	1200
Cash out		
Petrol	140	120
Food	130	150
Mortgage	550	550
Birthday Present	0	50
Theatre ticket	0	30
Mobile Phone top up	25	20
	845	920
Closing Balance	420	700

	October	November	December
	£	£	£
Opening Balance	400	295	270
Pocket Money	25	25	25
Birthday money (Nov)	0	100	0
Paper round	40	40	40
Christmas Presents (Dec)	0	0	150
TOTAL FUNDS	465	460	485
less Expenses			
Sweeties	20	20	20
cinema	35	35	35
PBS Game (Dec)	0	0	75
savings account	100	120	150
Stationery	15	15	15
TOTAL EXPENSES	170	190	285
closing Balance	295	270	200

National 4/5 Computing Science pupils have been learning about the life cycle of software development projects. Pupils have seen different scenarios and have used Python to create their own programs, using variables, conditions, data types, loops, arrays, and standard algorithms.

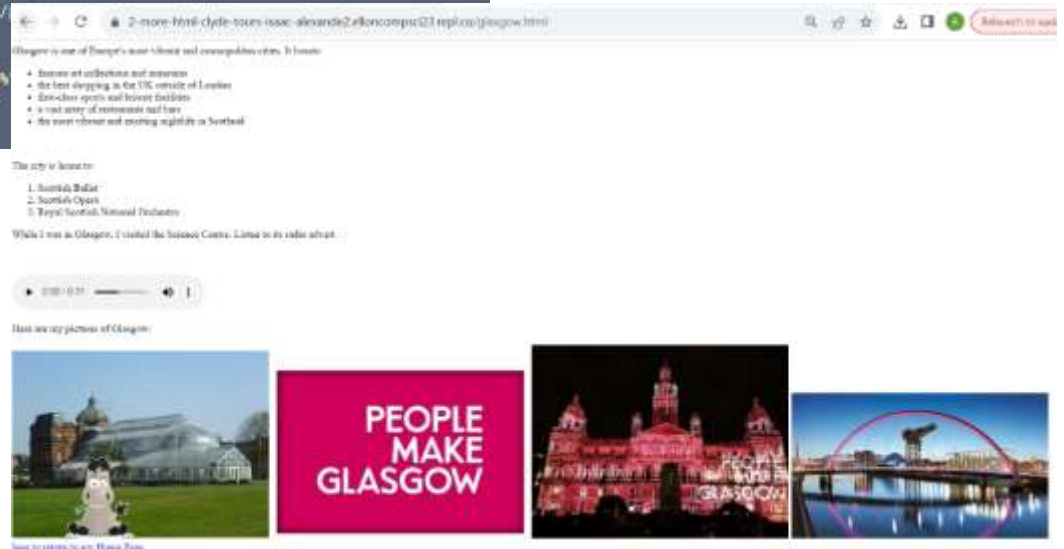
```
main.py
1 total= 0
2 allthrows = []
3 for count in range(10):
4     throw= int(input("enter the distance of the throw "))
5     while throw <20 or throw >80:
6         print ("error, not a valid number")
7         throw= int(input("enter the distance of the throw "))
8     allthrows.append(throw)
9     total+=throw
10
11 for Numthrows in range(10):
12     total= total + allthrows[Numthrows]
13
14
15
16 average= total/10
17 print ("Total distance thrown: " + str(total))
18 print ("Average distance thrown: " + str(average))
```

```
Console Shell Submissions
Interpret 30s on 09:42:14, 11/08

enter the distance of the throw 35
enter the distance of the throw 49
enter the distance of the throw 54
enter the distance of the throw 22
enter the distance of the throw 60
enter the distance of the throw 55
enter the distance of the throw 15
error, not a valid number
enter the distance of the throw 49
enter the distance of the throw 23
enter the distance of the throw 77
enter the distance of the throw 64
Total distance thrown: 488
Average distance thrown: 48.8
```

Pupils have also started working on the Website Design and Development unit and have been introduced to basic HTML tags to format web pages. Pupils have managed to successfully create a simple website using these programming techniques.

```
glasgow.html
10 </VLOGO>
17 <p>Glasgow is one of Europe's most vibrant and cosmopolitan cities. It boasts:</p>
18 <ul>
19 <li>famous art collections and museums</li>
20 <li>the best shopping in the UK outside of London</li>
21 <li>first-class sports and leisure facilities</li>
22 <li>a vast array of restaurants and bars</li>
23 <li>the most vibrant and exciting nightlife in Scotland</li>
24 </ul>
25
26 <br>
27 <p>The city is home to:</p>
28 <ol>
29 <li>Scottish Ballet</li>
30 <li>Scottish Opera</li>
31 <li>Royal Scottish National Orchestra</li>
32 </ol>
33 <p>While I was in Glasgow, I visited the Science Centre. Listen to its radio advert.</p>
34
35 <br><br>
36 <audio controls>
37 <source src="gscAdvert.mp3">
38 </audio>
39 <p>Here are my pictures of Glasgow:</p>
40
41 
42 
43 
44 
```



Higher Accountants have been learning about how to deal with new partners joining an already existing partnership. They have also been working on Investment Appraisal. Using a thinking routine, pupils came up with various colours, symbols, and images that they felt linked to the investment appraisal techniques:

- 1 Revaluation of the firm's assets in the Revaluation A/C.
- 2 Any profits/losses on revaluation shared between existing partners. Any profits on revaluation are credited to each partner's equity account in old profit sharing ratio and likewise, debited if there is a loss on revaluation.
- 3 Goodwill is valued and shared amongst the existing partners in profit sharing ratio.
- 4 Goodwill is to be written off between the new partners in sharing ratio.
- 5 Update the partners' equity accounts to reflect the above

TASK 1 – CALCULATE THE GOODWILL

Year	A & B profits	C & D profits	E & F profits	G & H profits	I & J profits
1	30,200	42,000	35,000	75,000	120,000
2	32,500	45,000	40,000	95,000	130,000
3	35,750	48,000	41,500	100,000	129,000
4	40,000	47,500	45,000	99,500	130,000
5	42,200	454,300	48,700	102,000	128,000

Payback

£

ARR

%

PAYBACK

August 31st 2023

Paid Back in Full

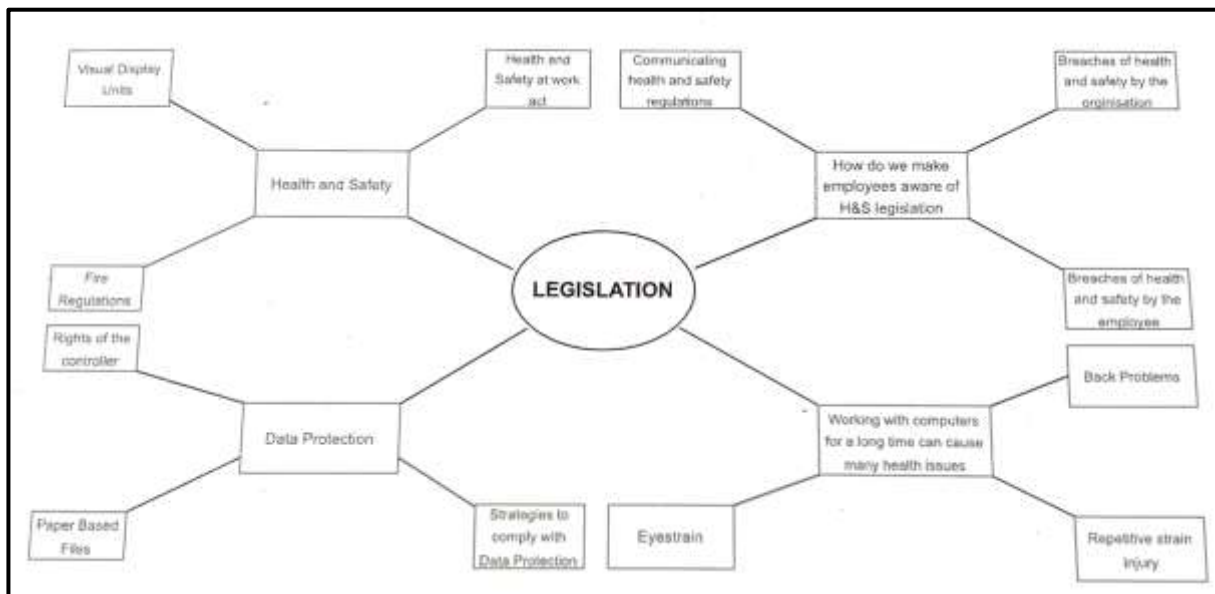
PAID

£ →

%

%

Higher Administration & IT pupils have been introduced to Pivot Tables and Pivot Charts in Excel this week. For the theory part of the course, pupils have been preparing mind maps and revision posters to summarise key content.



- data protection -

By Leona & Tahlia

Computer misuse Act 1990

- 1. This Act makes it illegal to carry out computer operations which are intended to interfere with the operation of a computer system or to cause the loss of or damage to data.
- 2. It is an offence for any person to do anything which is prohibited by section 1.

Copyright & Database Right

- 1. They have purchased enough licenses for their use
- 2. Employees do not copy software
- 3. The content of CD ROMs is not printed and copied
- 4. Information from the internet is not copied without permission

- Legislation -

By Leona & Tahlia

Health and Safety at Work Act 1974

- Reporting of Injuries, Diseases and Dangerous Occurrences Regulations (RIDDOR) 1995
- The Fire (Scotland) Act 2005
- Control of Substances Hazardous to Health (COSHH) 1994
- First Aid Regulations 1981
- Health and Safety (Display Screen Equipment) Regulations 1992

Health and Safety at Work Act 1974

The employer and employee both have responsibilities under this act: Health and Safety and Welfare Regulations 1992

Employers' responsibilities:

- Provide and maintain a suitable working environment
- Provide information and training
- Provide protective clothing and equipment if needed
- Provide a health and safety policy

Employees' responsibilities:

- Take reasonable care for their own safety and the safety of those who may be affected by their actions
- Co-operate with the employer with a mutual aim of ensuring a safe and sound workplace

- data protection -

By Leona & Tahlia

Computer misuse Act 1990

- 1. This Act makes it illegal to carry out computer operations which are intended to interfere with the operation of a computer system or to cause the loss of or damage to data.
- 2. It is an offence for any person to do anything which is prohibited by section 1.

Copyright & Database Right

- 1. They have purchased enough licenses for their use
- 2. Employees do not copy software
- 3. The content of CD ROMs is not printed and copied
- 4. Information from the internet is not copied without permission

- Act 15 -

Computer misuse Act 1990

- 1. This Act makes it illegal to carry out computer operations which are intended to interfere with the operation of a computer system or to cause the loss of or damage to data.
- 2. It is an offence for any person to do anything which is prohibited by section 1.

Copyright & Database Right

- 1. They have purchased enough licenses for their use
- 2. Employees do not copy software
- 3. The content of CD ROMs is not printed and copied
- 4. Information from the internet is not copied without permission

Higher Business Management classes have been introduced to organisational structure this week and have looked at key business terms in relation to how staff achieve goals set i.e., organisation charts, line/lateral relationships, span of control, formal & informal structures. Pupils have also been looking at market segmentation and how businesses use target marketing effectively.



Higher Economics pupils have been consolidating their knowledge on supply and demand, making their own revision notes to help support them in their prelim preparation.

public goods

- can consume without availability to others
- e.g. street lights
- public goods must be:
 - non-rival
 - non-rejectable
 - non-excludable
- govs have to provide as free market won't as it's motivated by profit

income inequality

varies by area

gini-coefficient measures

- uneven = even
- measures poor vs rich
- 0 = none, 1 = one has all
- free market causes inequality as based on consumer's ability to pay
- conflict equity vs efficiency

minimum price

min price $> P_e$ is seen to be too low

can create surplus

$Q_s > Q_d$ so surplus

P.G. non-rival

- your consumption doesn't affect others consumption
- e.g. walking under street lighting doesn't stop others

P.G. non-rejectable

- must consume the product

P.G. non-excludable

- cannot prevent use if they haven't paid for it

maximum price

gov can set max price if price is deemed too high to prevent it rising above a certain level

set below free market price

set to help low-income or as an anti-inflation strategy

gov set below P_e but $Q_d > Q_s$ so shortage

max price: black markets

- illegal market + max price develops when shortage
- consumers willing to pay lots for what they want

Shifts in Supply

inward shift

- P_0 excess demand make consumers + price + demand then +
- see + price, + supply to max
- continues until $Q = S$ clears at higher E_p of P_1

outward shift

- P_0 excess supply as $S_0 > S_1$
- price + demand + until market moves from $E_0 \rightarrow E_1$
- gives low E_p + high E_q

joint demand

- 2 goods demanded together
- complementary goods
- one + demand does the same for other good
- e.g. fish and chips

fish

chips

competitive demand

- when substitute goods have close subs
- one + demand, one falls
- e.g. Pepsi and Coca-Cola

joint supply

- when goods are produced together automatically
- e.g. beef and leather

beef

leather

Coca-Cola

In **PC Passport**, pupils have been working towards their Word Processing assessment. In class this week, pupils were creating business letters using the correct house style, before merging with a database file. They have also been using Excel's more advanced functions to create spreadsheet files.



Business Education & IT staff are looking forward to seeing what the rest of Term 2 brings!

A huge thanks to Mrs Ewen, the staff, and learners of the Business Education Faculty.

Pupil Achievement:

Congratulations to Matthew D in 2C1 for performing with the RSNO (Royal Scottish National Orchestra) last week at the Music Hall in Aberdeen. Very well done!



Pupil Achievement – YPI Class Finals

The winning teams through to the YPI finals on the 22nd of Nov are:

Pawpalz
Befriend a Child
Rebecca's Rainbow Heart
Friends of Anchor
Age Peterhead
Shirley's Space
Well done to all!



Pupil Achievement

S3 Football

Huge praise must be given to the boys S3 football team for the effort they put in and the dedication shown in their game against Mearns Academy this week. Although the result didn't go our way, we travelled there with only 12 players due to late call offs, of which half were defenders, and none of them a goalkeeper. Because of this a lot of them had to put the team first and play out of position, and they did that admirably without any complaints. For large parts of the game, we dominated and controlled the tempo, and if it wasn't for a crazy 10-minute spell we very well could have won!

Two very good goals came from Burak and Owen, but special recognition needs to be given to Lewis who stepped in to be our keeper and did the job extremely well. The best praise I can give him is that he played so well Mearns didn't even realise he wasn't an actual keeper!



Pupil Achievement:

Girls Football - Aberdeenshire Cup Quarter Final and League Double header for U15 Girls Football result. Ellon 10 - 1 Alford.

Huge congratulations to our girls this week on reaching their second cup semi-final this season and securing another 3 points in the league. The girls played probably their best half of football for the school today and were 6-0 up by half time. Natalie G opened the scoring in the first minute and the girls never looked back. Lots of excellent football played on the deck and excellent play from the wings which was pleasing on the eye.

Emily S was playing her 20th match for the school today and was in blistering form, grabbing 5 goals and an assist. Her strength and pace being too much for the Alford defence. She had scored 29 goals prior to today so her goals has taken her well through the 30's. Myah R was once again outstanding and proving to be a player with amazing prospects. The other 3 girls that took the eye today were Nicole I, who defended heroically and looked to go forward at every opportunity, Natalie G, who ran the midfield today, being first to every ball and whose footwork was immense and Katie G who was impressive getting her crosses into the box.

Amber S was also playing her 30th game for the school today and managed to save a penalty in the process. Well done girls on reaching your second cup semi-final this season. And even more pleasing is the standard of football you are playing and your behaviour and attitude, both on and off the pitch.

Players of match. Emily S and Natalie G.

Goal scorers: Emily S 🏆🏆🏆🏆🏆, Ava R. 🏆🏆, Natalie G 🏆, Myah R 🏆 and Chloe W 🏆

Assists: Millie B 1, Molly P 2, Chloe W 1, Ava R 1 and Emily S 1.



Pupil Achievement:

Health and Wellbeing - Pupils of the Month for October

Congratulations to the following pupils for receiving a health and wellbeing pupil of the month award for October. All pupils will get their name on the POTM wall and an over and above certificate.

Mr Meechan - James M (2F1), Natalie C (5F2)

Miss Williams - Cameron D (1C1), Isla M (4C1)

Miss Daniel - Erin R (1K1), Blair T (6C)

Miss Hepburn - Jackson N (2C1), Robyn G (3M2), Jessica Y (4M1), Sophie M (5F2)

Mr Lawson - Ross McA (6F), Blair T (6C)

Mr McCall - Charlie B (1M1), Vavara L (2K2)

Mr Caskie - Harris C (4S2), Jack C (4F1)

Miss Morgan - Laura J (3S1), Jayden Y (1F1)

Mrs Donald - William T (1S2)



Pupil Achievement:

A fantastic display of attacking football tonight from the senior boys team with a 9-0 victory against Milnes High School in the North of Scotland Cup 🏆. Despite going in 2-0 up at halftime & dominating possession, Ellon passed up several chances and allowed Milnes two excellent opportunities. Ellon were too slow in moving the ball and this allowed Milnes to snuff out several attacks. It was all change after halftime with Ellon moving the ball much quicker and scoring a flurry of four goals in a 20-minute spell at the start of the second half. Credit to Milnes who continued to try and create opportunities and play passing football despite the scoreline. Overall, an excellent win and onto the next round.



Pupil Achievement: Senior Girls Football League Result. Ellon 5-1 Inverurie.

What a performance this week by our girls as they came back from 0-1 down to beat a very talented Inverurie side 5-1. The girls played some exceptional passing football once again and chased and battled for every ball. Today's result was even more special considering half the team today were juniors, who played to help the seniors. Many of the juniors asked if they could only play half of the game, as they had a game on Tuesday and some are playing again tomorrow, however, the lack of players and injuries before the game meant that these girls had to play much more than they had intended to. What a shift they put in!

Special mention today to Natalie G, who was our deserved player of the match with some good midfield play-tackling, harrying and some exceptional passing. Millie B also showed her ability to play in any position for any team by playing in an unaccustomed left back position to help the team out for the whole second half and didn't look at all out of her depth there. Alisha M also had a very assured game in defence, marshalling the defence and making some very important interceptions. As for Myah R, simply getting better and better, stronger and stronger in every match she plays, those on side of pitch are almost dizzy trying to keep our eye on the ball when she has it! Her goal today was her 20th in her one and a half season's school football.

Player of match. Natalie G, with Alisha M a very close second.

So proud of these girls. Mr McLean

Goal scorers- Rebecca P 2, Paige W 1, Grace S 1, Myah R 1. Assists - Paige W 1, Natalie G 1.



If your child/children has/have successes you'd like to share with us, please send us an email via the school email address marked FAO Mrs P Buchan, Rector. Any photos you can share with us are always welcome too.

ellon.aca@aberdeenshire.gov.uk



e-Sgoil Study Support 2023-24

Welcome to the e-Sgoil Study Support programme page. Registration for Evening Study Support is now OPEN. Check out this Thinglink to find out more: <https://www.thinglink.com/card/1761376381146497510>

Webinars will start in the week beginning October 30th. We offer fifty-one FREE weekly Study Support webinars during term time, covering a wide range of subjects and levels. Study Support is for Senior Phase learners who are working towards National Qualifications.



Study Support Webinars – A Nutshell Guide for Learners

What are the Webinars and who are they for?
The Webinars will complement your subject courses in school. They are for any pupil that is currently undertaking a SQA course. They are offered in the evenings during term time and delivered via Microsoft Teams.

What will I gain?

- Knowledge of different subjects or subjects that I am studying in school
- Different approaches to the subjects that I am studying in school
- Some exam/assessment techniques that will help me to do well in my assessments
- Topic/subject knowledge that will complement what I am already studying in school

How will I learn?

- Through live online webinars with a specialist teacher
- Alongside learners from a range of schools across Scotland
- By accessing high quality learning resources that will be available to you in Teams
- By using appropriate digital tools
- By posing questions and queries in the Teams chat during the webinars

What is my role?

- To learn in a different context
- To develop new skills
- To communicate effectively with Teams so that teachers can provide the correct level of support
- To share feedback on the experience

How do I sign up?
Visit [e-sgoil.com/study-support/](https://www.e-sgoil.com/study-support/) for more information

“Thank you so much for this brilliant resource it has developed my learning from school and focused my revision for upcoming assessments.”
– SA webinar attendee

National e-Learning Offer

Logos for Education Scotland, e-Sgoil, and other partners.

Higher Education - SAAS – Funding Awareness Online Events



Is your child applying to go to university next year (2024)? If so, I would like to take the opportunity to tell you about the upcoming online funding presentations we will be offering from 30 October until 29 November 2023. These sessions can be attended by pupils/students and their parents/legal who are considering starting higher education in the 2024-2025 academic year.

During the online application presentation, we will explain the funding available from the Student Awards Agency Scotland (SAAS) for those planning to undertake higher education courses (HNC/HND/Degree courses). We will also provide information on how and when students should apply to SAAS for their funding. We can provide bespoke advice to attendees should they have any questions about the funding available or application process. We would be grateful if you could please help us to raise awareness of these sessions by sharing the details with stakeholders you feel would benefit from attending. This could be via a newsletter, social media, or any other channels you use to share information.

These sessions can be booked here; ; Join the guestlist – SAAS Funding Presentation - National – Microsoft Teams, Multiple dates and times ([tickettailor.com](https://www.tickettailor.com))

If you have any questions, then you can contact us at saasevents@gov.scot
Thank you in advance for your continued support.

Kind regards Michael Scott, Customer Outreach Manager Funding Awareness

Health and Safety at Ellon Academy Community Campus:

We ask that parents and carers remind their children of the following:


To ensure that learners and staff are safe around the school campus, we are reminding learners not to walk/run through the car parks and bus parks. In the morning and after school there are over (approximately) 200 cars, taxis and buses coming in and out of the campus and learners must stick to the footpaths for their own safety and the safety of campus drivers.

We remind parents/carers/relatives who drop off and pick up learners that they should not access the school via the road past the bus shelter and the bus park. This access is reserved for buses and school staff. Please use the turning to the right at the front of the school (before the bus shelter) all learner drop offs and pick-ups.


We also ask that parents/carers continue to use the front facing parking and the one-way system at the front of the school when dropping off and picking up their children from school. Thank you.

Here is a link to the leaflet with car parking information for parents/carers:

<https://ellonacademy.aberdeenshire.sch.uk/wp-content/uploads/2023/06/Car-Park-Parents-Leaflet.pdf>




ELLON ACADEMY COMMUNITY CAMPUS



CAR PARK

PUPIL DROP OFF (7:30 - 9 am)
Parent/Carers are asked to drop pupils off and pick them up in the designated drop off lane/zone and **NOT** to enter any of the assigned car parking spaces.



On leaving the drop off/ zone, Parents/Carers are asked to stick to the one way system by following the road down to the turning circle to the West of the Campus, thus ensuring that the traffic flow is all **one way**. Navigate the turning circle one car at a time and give it a wide berth as it has a tight radius.




PUPIL PICK UP
Parents/Carers should **forward park** in the angled parking bays (the angled design does not allow for reverse parking) then reverse out and continue to follow the road down to the turning circle to the West of the Campus, thus ensuring the traffic flow is all **one way**. Alternatively, park in the Community car park behind the swimming pool.

PARK AND STRIDE
Parents/Carers can also use the Meadows car parking facilities for pupil drop off/pick up. This will help alleviate traffic pressure on campus.


COMMUNITY USE
For access to Swimming, Leisure and Community Resources during the school week and outwith the drop off times for pupils please park in the public spaces beyond the drop off and disabled zones.



DISABLED
These spaces are reserved for blue badge holders and emergency vehicles only. They should not be used for dropping off/picking up.




CYCLING
It is advisable that all pupils who cycle to school are aware of wet and icy conditions, road safety, cycling in the dark and have working lights, visible clothing and cycle helmets. Cyclists should stick to cycle paths and ideally have passed their cycling proficiency test. Cycle stands available on campus.



The Ellon Academy Community Campus Management Team and Parent Council consider the safety and wellbeing of all campus users to be of paramount importance.

QUESTIONS OR COMMENTS
Email: ellon.aca@aberdeenshire.gov.uk
Telephone: 01358 720715



Keeping children and teenagers safe online:

'Report Remove'

The NSPCC has developed resources to support learners who have shared explicit photographs of themselves online. Please follow this link for more information:

<https://www.nspcc.org.uk/keeping-children-safe/online-safety/online-reporting/report-remove/>



COVID-19 symptoms and what to do:

As you may be aware, some strains of Covid-19 are on the rise, so this information from the NHS website is for parents/carers. Covid-19 symptoms can include:

- a high temperature or shivering (chills) – a high temperature means you feel hot to touch on your chest or back (you do not need to measure your temperature)
- a new, continuous cough – this means coughing a lot for more than an hour, or 3 or more coughing episodes in 24 hours.
- a loss or change to your sense of smell or taste.
- shortness of breath
- feeling tired or exhausted
- an aching body
- a headache
- a sore throat
- a blocked or runny nose
- loss of appetite
- diarrhoea
- feeling sick or being sick

The symptoms are very similar to symptoms of other illnesses, such as colds and flu.

Most people feel better within a few days or weeks of their first COVID-19 symptoms and make a full recovery within 12 weeks. For some people, it can be a more serious illness and their symptoms can last longer.

What to do if you have symptoms of COVID-19

You may be able to [look after yourself at home if you have COVID-19 or symptoms of COVID-19](#).

Try to stay at home and avoid contact with other people if you or your child have symptoms and either:

- have a high temperature.
- do not feel well enough to go to work, school, childcare, or do your normal activities.

You can go back to your normal activities when you feel better or do not have a high temperature.

If your child has mild symptoms such as a runny nose, sore throat, or mild cough, and they feel well enough, they can go to school or childcare.

If you are eligible for treatments for COVID-19, you should take an NHS rapid lateral flow test as soon as you get symptoms.

[Find out more about treatments for COVID-19 and who can have them](#)

What to do if you have tested positive

You are no longer required to do a COVID-19 rapid lateral flow test if you have symptoms, but if you or your child have tested positive for COVID-19:

- try to stay at home and avoid contact with other people for 3 days after the day you took your test if you are under 18 years old.
- try to stay at home and avoid contact with other people for 5 days after the day you took your test if you are 18 years old or over.
- avoid meeting people who are more likely to get seriously ill from viruses, such as people with a weakened immune system, for 10 days after the day you took your test.

[Find out more about who can get a free NHS COVID-19 test](#)

Ask for an urgent GP appointment or get help from NHS 111 if:

- you're worried about your or a child's COVID-19 symptoms or are not sure what to do.
- the symptoms are getting worse or are not getting better.
- you or a child have other signs of illness, such as a rash, loss of appetite, or feeling weak.
- you or a child have a high temperature that last 5 days or more or does not come down with paracetamol.
- a child under 3 months old and has a temperature of 38C or higher, or you think they have a high temperature.
- a child 3 to 6 months old and has a temperature of 39C or higher, or you think they have a high temperature.

It's particularly important to get help if you're at increased risk of getting ill from COVID-19, such as if you're pregnant, aged 60 or over, or have a weakened immune system. You can call 111 or [get help from 111 online](#).

Extra-Curricular Activities:

We are always encouraging our learners to take part in clubs and activities in and out of school to support skills development, so thanks to Mrs Warne for pulling together all the Ellon Academy extra-curricular activities into one booklet for pupils and parents/carers. The booklet can be viewed by following the link to our website below:

<https://ellonacademy.aberdeenshire.sch.uk/extra-curricular-activities/>



Health and Wellbeing Extra-Curricular Timetable for Term 2:

Please note all pupils attending sports clubs/NASSA events must have paid their EASA membership, or they will be unable to attend.

NEW SPORT: Girls Rugby every Monday afterschool with Ellon Rugby Club Development officer ! Come and give it a try!! 🍌🍌🍌

	Lunchtime	Afterschool: Games Hall	Afterschool: Gym B	Afterschool: Gym A	Afterschool: Fitness Suite	Afterschool: Pitches	Alternate Space
Mon		S1-6 Badminton 3:30 – 4:30pm				S1-6 Girls Rugby Active Schools 3:30-4:30pm	
Tues				S4-6 Cheer Miss Daniel, Miss Williams 3:30 – 4:45pm		S1-6 Rugby Mr McCall 3:45 – 4:45pm	S1-6 Girls Hockey Mr Meechan (every second week) 3:30-4:30 pm
Wed		S3-6 Netball Miss Williams 2:40 – 3:45pm		S1-3 Cheer Miss Daniel 2:40 – 4:00pm	S4-6 Fitness Mr McCall 3 – 4pm	Football S1 Mr Meehan S2 Mr Canale S3 Mr McBeath 3 – 4pm	
Thurs	S1-6 Teen Yoga Mrs Winterbottom	S1-2 Netball Miss Williams 2:40 – 3:45pm		S1-6 Gymnastics Sports Captains 2:40 – 3:45pm		S1-6 Girl's football Mr McLean 3 – 4pm	Staff Yoga Mrs Winterbottom 2:40 – 3:45pm
Fri		S1-6 Basketball Sports Captains 2:40 – 3:45pm		Staff Badminton 2:40-3:45pm			

Pupil Information:

SPORTS LEADERSHIP OPPORTUNITY

When: Thursday 16th & Friday 17th November,
10am – 4pm

Who: S2-6

Where: Peterhead Leisure & Community Centre –
Games Hall

Cost: £5

What: SQA accredited course for pupils looking to
assist with running and coaching of sports teams
and clubs in and outside of school.

This is great for pupils interested in pursuing
sports coaching/teaching in the future as well as
school sports captains, those studying sports
leadership and class sports reps.

Please note this is being ran by activeschools on
the in-service days next week and therefore no
transport or school lunches will be available.

For more information, please read the leaflet to
the right.

For further info and to sign up please email:
kelly.green@aberdeenshire.gov.uk

activeschools
ABERDEENSHIRE

SPORTS LEADERS

LIVE LIFE
ABERDEENSHIRE

I CAN LEAD – Sports Leaders UK Course

Thursday 16th & Friday 17th November, 10am – 4pm

Peterhead Leisure & Community Centre – Games Hall

INFORMATION SHEET

'I Can Lead' provides an introduction to leadership that will give learners the knowledge and skills to assist in leading basic sports/activity sessions under direct supervision. The course is fun and practical with a focus on personal development and not just sporting ability. On completion of the course learners will gain an award that will be recognised on their CV. Following the two days of guided learning, pupils will get the opportunity to gain awards and qualifications in a wide variety of sports to enhance their sports leadership skills, abilities and knowledge.

Who can apply? Pupils in S2, S3 and S4 who would like to learn about leading sports activities in schools.

What will be in the course? The course is made up of various units that cover session planning, communication, session delivery, officiating etc.

What will participants do? This is a practical course so participants will take part in various activities, but also have the opportunity to deliver warm-ups, skills and games under supervision. There are some worksheets to complete so that you have a folder of information to keep with you.

Do I need to be very sporty? No, we are looking for enthusiastic young people to help at our various Active Schools activities, we are not looking at how well you play a sport.

Do I need to attend both days? Yes, in order to complete the required units you will have to attend both days.

Leadership hours
Once you have completed the course to gain your certificate you must do 5 hours of leadership, these hours are to be completed within Active Schools programmes.

How much is the Leadership Programme going to cost?
The price of the programme is £5 which covers all learning materials, facility hire costs and registration of the course with the SQA.

lifelifeaberdeenshire.org.uk
Part of Aberdeenshire Council

Bright Red Publishing - Bag a Bargain Bespoke for Ellon Academy parents/carers!

Bright Red Publishing is Scotland's leading independent educational publisher and home of top Study Guides and Course Books for Scottish Qualifications Authority exams (some of which have been written by our very own Mr MacBeath!) Star!

In conjunction with the school, we have secured a discount code for all to use – ELLON30. If you are ordering a study guide to help support your or your child's studies, please use the discount code ELLON30 to secure 30% off any purchase.

There catalogue can be found here, where you will find many study guides that we offer here at Ellon Academy.

<https://www.brightredpublishing.co.uk/Shop>



Ellon Academy Careers Fair: From 6 - 8 pm on Tuesday 14th November, we are delighted to welcome volunteers from a whole range of industries, as well as representatives from further and higher education providers, at the Ellon Academy Careers Convention.

All pupils and parents are invited to attend the evening and to find out more information about different careers and the skills, qualities and qualifications that are required to access them.



We look forward to welcoming all pupils and parents along to the Ellon Academy Careers Convention 2023 from 6 - 8 pm on Tuesday 14th November. You are welcome to come along and meet with employers and representatives from further education centres to find out more about a range of career opportunities.

A full programme of attendees can be found on the Parent Zone area of the school website, or at

<https://tinyurl.com/EACareersConvention>.

The event routinely proves to be a very informative event for all pupils but is particularly helpful for our pupils in S2-5 who face subject choices in the new year.

Our Pupil Led Café will also be present on the evening offering a variety of hot drinks. Please note that drinks may only be purchased with cash.

Pupil Information:

ALL PUPILS – WEEKLY MERITS

Congratulations to all learners who are routinely receiving messages home for the weekly merits and over and above's and/or termly House certificates too. As we enter Term 2, most year groups are preparing for assessments and practising for SQA exams. As a school, we promote a growth mindset and 'can do' attitude. For that reason, we will be sending messages home to those pupils who are being recognised for their hard work and dedication. Working hard and giving it your best effort is the key to success this term. Good luck!

Senior Leadership Team

ALL PUPILS – DIVERSITY GROUP

Caitlin Turriff (She/Her) - LGBT+ Inclusion Advisor, Four Pillars

Caitlin will be visiting the Diversity Group this month. If anyone feels that they need information/support relating to LGBT+ or inclusion, please come along to the Library at lunchtime on Monday 6th November. All are welcome at the Diversity Group – no questions & no judging! Mr Higgins

S5/6 PUPILS – WORK EXPERIENCE: NURSES AT WORK

Are you interested in a career in nursing, healthcare, or medicine? NHS Grampian are offering a live virtual work experience programme from Monday 4th-Friday 8th December 2023. The programme is suitable for anyone considering a career in healthcare, particularly a career in nursing, as well as for those applying for entry onto courses in September 2024. The proposed topics include learning disability nursing, paediatric nursing, adult nursing, mental health nursing, midwifery, healthcare support workers, paramedic practice, and support for applying and interviewing for higher education courses in nursing, medicine, healthcare, or occupational therapy. If you are interested, please speak to Mr Abberley-Nicoll (F44) before Tuesday 21st November to receive an application form. Your application form will need to be signed by your Guidance Teacher.

Mr Abberley-Nicoll

For your information:

SENIOR DRAMA GROUP: DNA 30/11/2023

For one night only – Ellon Academy Senior Drama Group presents: DNA by Dennis Kelly. Tickets are £5 and available from the Main Reception at Ellon Academy and J&K Shoes (Ellon). **We recommend that tickets are bought for audience members who are 16 years or over due to some adult content.**



Community Information:

Ellon United Junior Football Club are keen to have lots of local support at their home games at Ellon Meadows. The next fixture is on Saturday 11th November, Ellon United v Dyce @ The Meadows, 13:30PM K.O. All welcome!

**Dates For Your Diary****Term 2:**

w/b 6.11.23	S6 Guidance Interviews over the next 4 weeks
w/b 13.11.23	S2/S3 Tracking Report 1 issue to parents/carers.
13 th – 19 th Nov	Book Week
14.11.23	Ellon Academy Careers Fair – 6-8pm
Thurs 16/Fri 17 Nov	In-service Days
Mon 20.11.23	S2 Parents Evening (Virtual) 4.00pm – 6.30pm
Thurs 30.11.23	Senior Drama Club presents 'DNA' by Dennis Kelly, 7.30pm in the Theatre
Weekly from 29.11.23	Christmas lunches in the canteen (S1 – 29.11.23, S2 – 6.12.23, S3 – 13.12.23, S4/5/6 – 20.12.23)
Thurs 7.12.23	Interhouse Swimming Gala
Fri 8.12.23	Christmas Jumper Day (Foodbank collection)
Thurs 7.12.23	S4 Parents Evening (Virtual) 4.00pm – 6.30pm
Wed 13.12.23	S5/6 Parents Evening (Virtual) 4.00pm – 6.30pm
Tues 19.12.23	Music for Christmas Concert – 7.30pm
Thurs 22.12.23	Christmas Ceilidh
Thurs 22.12.23	Dress Down Day
Thurs 22.12.23	End of Term 2 (Fri 23.12.23 is an Occasional Day holiday for the Ellon Cluster)

Term 3:

Mon 8.1.24	Term 3 begins.
------------	----------------

The Ellon Academy School Calendar for session 23/24 is available to view on our school website by following the link below.

<https://ellonacademy.aberdeenshire.sch.uk/calendar/>

Thank you for your continued support and we hope our Ellon Academy families and friends have a lovely weekend.

P Buchan

Rector 10.11.23